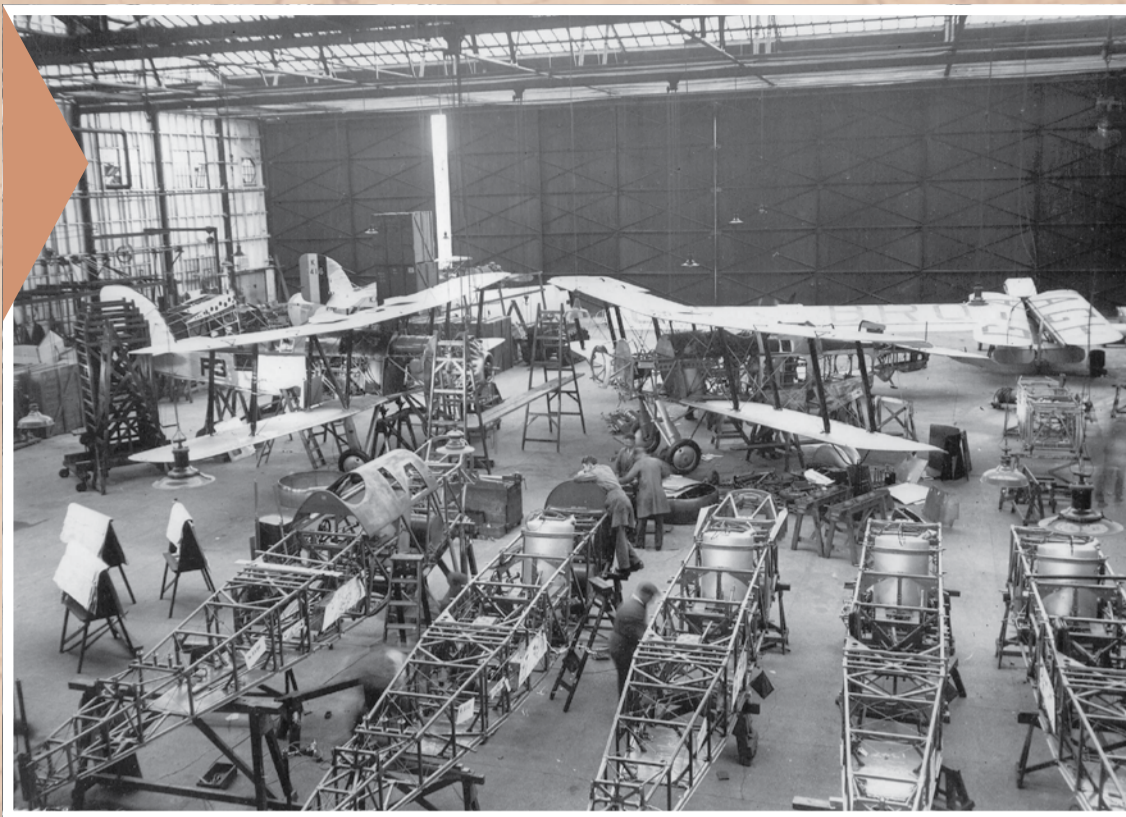


# Yeovil at work in the 1930s



► Aircraft under construction at Westland Aircraft Works

The aircraft were the Wapiti, a two-seater general-purpose bi-plane and the Wallace, the first in Royal Air Force service to be provided with an enclosed cabin for the pilot and observer/gunner.

From their early beginnings as retail ironmongers, Petters Ltd had grown into one of the United Kingdom's largest manufacturers of industrial and marine oil engines at their Nautilus and Westland Works. Petter engines ranged in size from one and a half to 540

B.H.P and thousands were in use in many parts of the world. James the son of John Petter an ironmonger from Barnstable obtained the existing Yeovil Foundry. It became the Petter & Edgar Foundry, which by 1881 was producing the Nautilus grates and first Petter oil engine by 1882. Ernest and Percival Petter (twin sons of James) opened the Nautilus Engine Works in 1901 selling throughout the World, and at the request of the British Government built their first aircraft under sub-contract in 1916.

Milk and Cheese were marketed in Yeovil from the surrounding area so it was a natural step commercially to make the town a centre of the dairy industry. From their modest beginnings as dairy wholesalers in the 1890s, Messrs Aplin and Barrett had grown into one of the largest national producers of fine dairy products under the 'St. Ivel' brand. During 1933, Messrs Aplin and Barrett were carrying out the extensive rebuilding and enlargement of their factory at Newton Road.

Yeovil's past industries had included linen, rope and sailcloth making. Parchment making had complimented the use of skins for the ever-expanding glove trade and although the industrial revolution heralded mechanisation and production lines Yeovil's industries could still trace their roots to mainly agricultural origins. In 1933 Yeovil's staple Gloving industry was still producing some of the finest gloves in the world and there were 35 firms making and selling gloves to national and international markets probably employing over 10,000 people.

☛ In 1933, The Westland Aircraft Works, still a branch of Petters Ltd, was employing nearly 3,000 people and manufacturing two successful Westland designed military aircraft ☛



► Westland Wallace's on active service

THE WORKS OF  
**PETTERS Ltd., YEOVIL**  
Manufacturers of  
Engines and Aircraft.



The Works of Petters Ltd. Photographed from a Westland Aeroplane.

Situated at the west end of the Town of Yeovil are the Works of Petters Limited.

The Engine Works of Petters Ltd. (Established in 1895) is one of the largest and most up to date in Great Britain, devoted exclusively to the manufacture of Oil Engines. Petter Engines are manufactured in sizes from 1½ to 540 B.H.P. for all industrial and marine purposes, and many hundreds of thousands are in use in all parts of the world.

The Westland Aircraft Works, which is a branch of Petters Limited, adjoins the Engine Works, and since 1915 has developed into an important industry for the supply of both civil and military Aeroplanes.

Petters Limited are always glad to give Engineers all possible information and advice, and to receive at their Works visits from all interested in power for any purpose.

**Petters Ltd., Westland Works, Yeovil.**

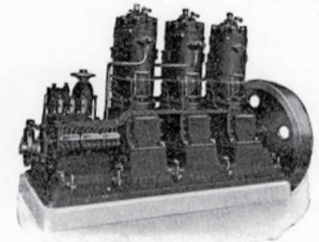
## ACHIEVEMENT

To meet the great expansion of our trade, not only in this country but in all parts of the world, we had to enlarge our factory at Newton Road very considerably. Plant and machinery of the latest and most improved type have been installed and our factory now stands one of the largest and best equipped in the Kingdom for Dairy products of all kinds as well as for Ready-for-eating foods made and sold under the brand of

**St IVEL**

APLIN & BARRETT & THE WESTERN  
COUNTIES CREAMERIES Ltd.  
Head Office: YEOVIL.

## THE PRODUCTS OF PETTERS Ltd., YEOVIL



The illustration shows a 270 B.H.P. Petter Atomic Diesel Engine. Petter Oil Engines are in use all over the world. They comprise:

STATIONARY ENGINES for Mines, Docks, Factories, Mills, Hotels, Public Buildings, &c. Sizes 1½ to 540 B.H.P.

MARINE ENGINES for Yachts, Tugs, Launches, Barges, Fishing Vessels, Trading Craft, &c. Sizes up to 450 B.H.P.

ELECTRIC LIGHTING SETS for Farms, Homes, Shops, Factories, Hotels, Public Halls, Churches, Ships, &c. From ¼ Kilowatt upwards.

PUMPING and Combination Plants for all purposes.

AIRCRAFT. The two types at present in production are: CIVIL. The Wessex 3 Engine 6/8 seat Cabin Monoplane. MILITARY. The Westland Wallace general purpose biplane.

PLEASE SEND US YOUR ENQUIRIES.

**Petters Ltd., Westland Works, Yeovil.**

